

For all your cycling needs:



Big Poppi Bicycle Co.  
1126 Moro St.  
Manhattan, KS 66502  
785.537.3737  
www.bigpoppibikes.com

**How to get there:**

From Big Poppi's, take Anderson Ave east. Go north on Tuttle Creek Blvd/Hwy 24/Hwy 77 (left) and travel for approx. 30 minutes. 1/2 mile past the town of Randolph turn east on Hwy 16 (right). Before the bridge turn left on 8800 W. Trailhead is 100 yds ahead on the right.

**A Rider's View of Fancy Creek Trail:**

An initial descent leads you to a technical rock garden that lasts a few hundred yards to a road crossing, use caution approaching. An intense climb awaits you after the crossing. Following the climb, get your high gears ready for fast single-track through the next half-mile. If you are ready for a short break, a covered resting spot with picnic tables will be on the right. Then cross the bridge and dig in for a few long grueling climbs.

Shortly after the road, beware of old trail intersections. At the forks, stay to the left and at the intersection, go straight. Over the next mile, enjoy the fast paced single-track, but keep those hands on your brake levers and watch out for technical sections with large rocks. In the rock garden before the 2.5 mile mark, beware of the "Derailleur Killer" or more specifically a channel made of solid rock with a boulder in the middle.

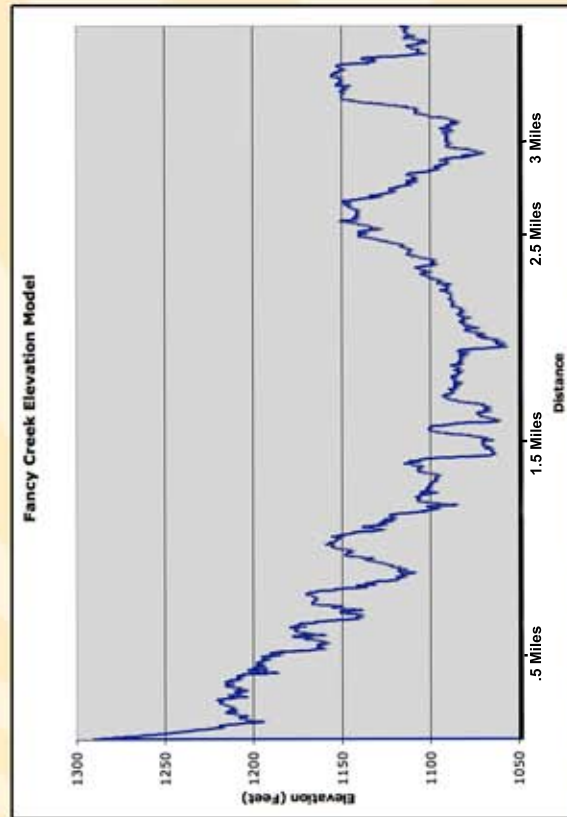
If your legs have turned to jelly, feel free to take a break, you're at the half-way point. More long climbs through wooded areas await you. When you come to the third road crossing, you've almost made it to the finish line. However, an 8 story climb lies between you and the end. Stop for the view at the overlook, we won't tell your friends the real reason. Then it's all down hill to the finish line.



Trail mapped by:



View from Observation Point



**The Trails of Riley County**



Rock Garden near mile 2

**Fancy Creek Trail**

*Intense single track riding with climbs around every corner and handle bar gripping descents*

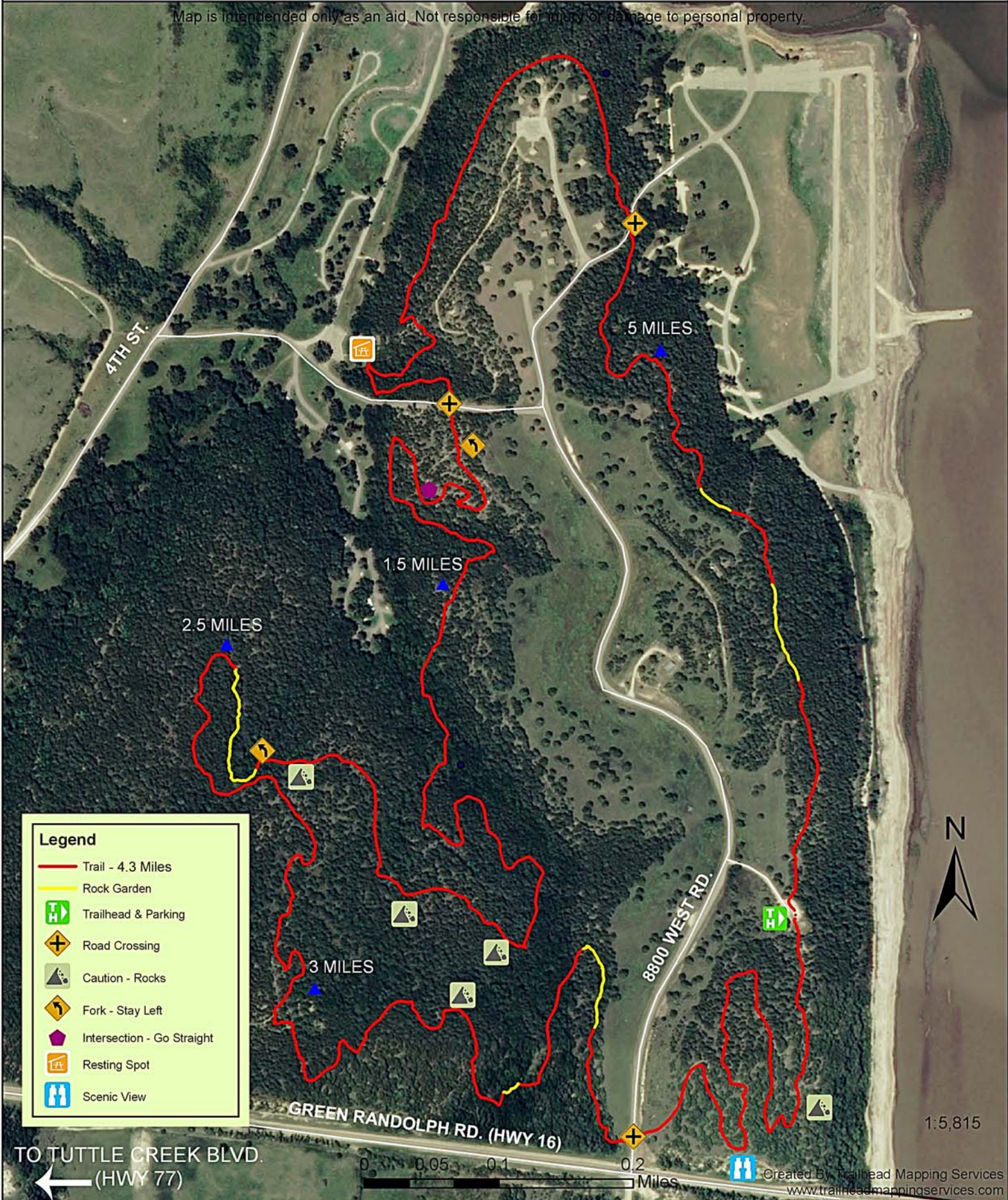
4.3 Miles  
Difficult/Technical  
Mountain Bike Ride



# Fancy Creek Trail



Map is intended only as an aid. Not responsible for injury or damage to personal property.



**Legend**

- Trail - 4.3 Miles
- Rock Garden
- Trailhead & Parking
- Road Crossing
- Caution - Rocks
- Fork - Stay Left
- Intersection - Go Straight
- Resting Spot
- Scenic View

TO TUTTLE CREEK BLVD.  
(HWY 77)

0 0.05 0.1 0.2 Miles

Created By Trailhead Mapping Services  
www.trailheadmappingservices.com

1:5,815