

For all your cycling needs:



Big Poppi Bicycle Co.
1126 Moro St.
Manhattan, KS 66502
785.537.3737
www.bigpoppibikes.com

How to get there:

As many trail entrances exist, choose the one closest to you. Here's just two of the many entrances...

West Entrance: From Big Poppi's head south on 14th St. Go west on Fort Riley Blvd (right). Head south on Rosencutter Rd (left) and turn left on Pecan Circle. The trail entrance is at the end of the road.

North Entrance: From Big Poppi's hear east on Anderson Ave. Go north on Tuttle Creek Blvd (left). Turn east on Casement Rd (right). Head south on Hayes Rd (right) and the parking lot will be on the left.

A Rider's View of the River Trails:

Hop on the trail at multiple locations. Enjoy a relaxed pace ride on a paved and crushed limestone trail. Stop and take a break at a variety of benches along the trail. If you need to stop and fill up your water bottle or your four legged friend need a drink, grab some water at the water fountain at South Manhattan Ave entrance. The Linear trail connects to the Northeast Community Park so that you can stop and throw a Frisbee for the dog. The trail also allows you quick access to the River Trail. A perfect trail to catch Manhattan's stunning sunsets.

Trail mapped by:



View of the Kansas River from the trail



The train bridge from the trail



Wildflowers along the trail



The Trails of Riley County



One of the many benches along the trail

Linear Trail

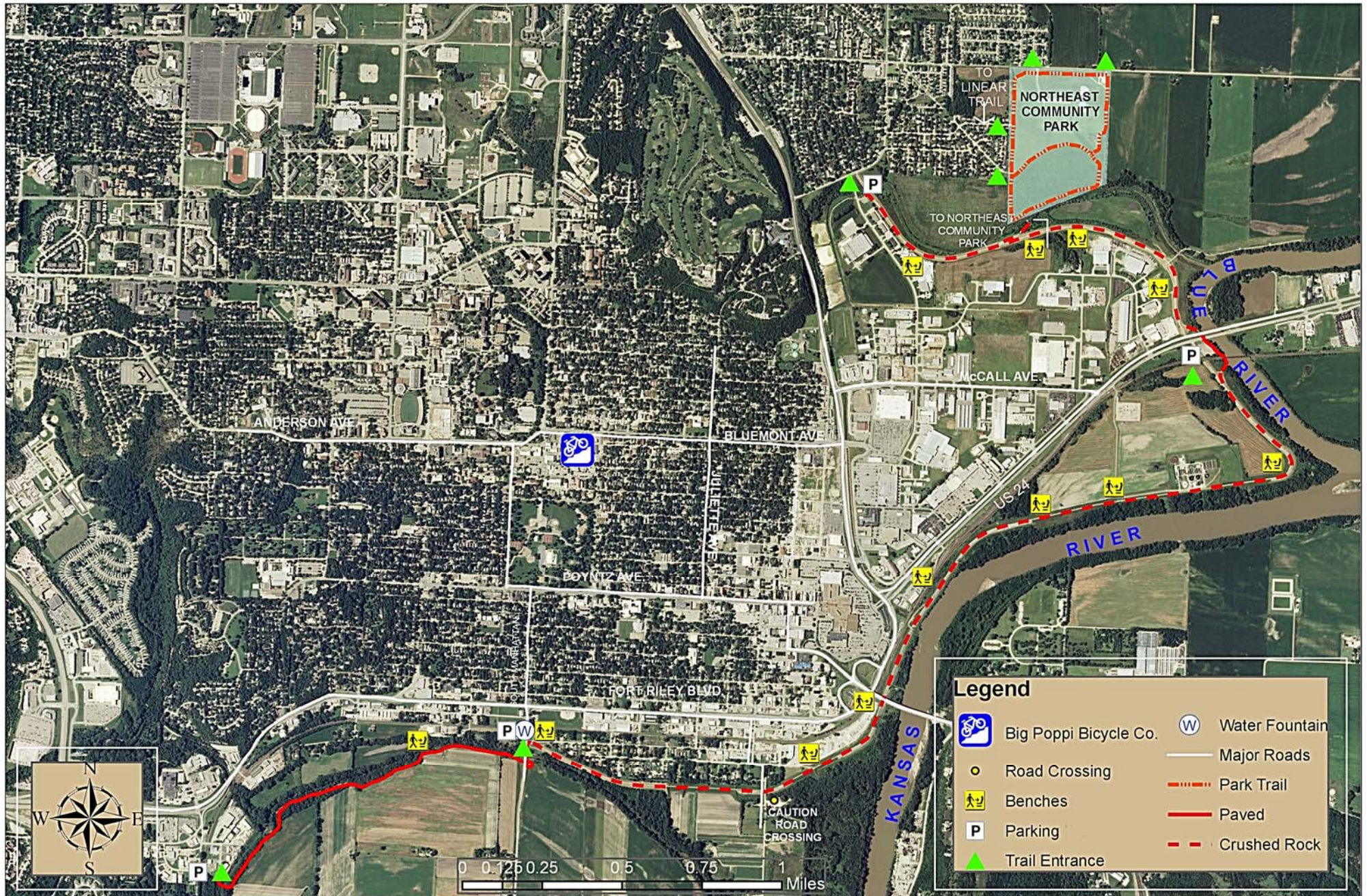
A family friendly and pet-lovers trail

Variable length
Full Extent - 9 miles
All Abilities and Handicap Friendly





Manhattan, Kansas, Linear Trail



Map is intended as an aid in navigation. Trail and conditions may change. Not responsible for injury or damage to personal property.