

For all your cycling needs:



Big Poppi Bicycle Co.
1126 Moro St.
Manhattan, KS 66502
785.537.3737
www.bigpoppibikes.com

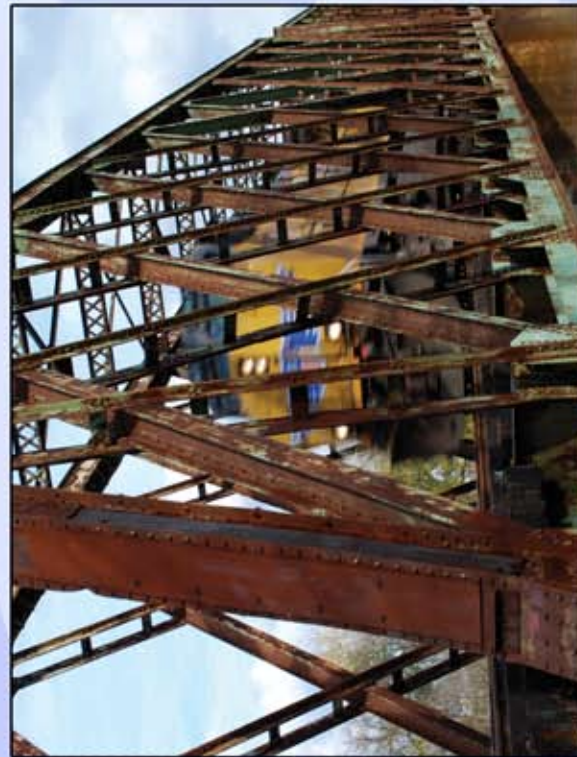


Manhattan
The Little Apple
Convention & Visitors Bureau

The Trails of Riley County



Trail Entrance



Train bridge near trailhead



Old truck along the trail

How to get there:

From Big Poppi's, take Anderson Ave east. Go north at Tuttle Creek Blvd (left). Go east on McCall (right). Head north on Hwy 24 (left). Just before the bridge over the Blue River, on the right is the parking lot for the River Trails and Linear Trail.

A Rider's View of the River Trails:

Hop on the Linear Trail and pass under the train bridge. A quick left will start the single track experience with a fast, flowing trail along the river bank. After a half mile the single-track enters the loop.

Next, the choice is yours, go right and enjoy some tight turns to start, go left and start a longer straight-away. Going right you'll encounter a few up-and-overs including a 20 foot descent through a ravine. Near the second trail entrance, you'll find a terrain park worthy of your time. After playing, continue on the loop and work your way around to river side of the loop. Grab your high gears for a fast return to the trail head. If you chose left at the intersection, then you'll experience all this, but in reverse. Which way is better? You decide.



Trail mapped by:

River Trails

*Rolling & scenic trail ride along
the Kansas and Blue Rivers*

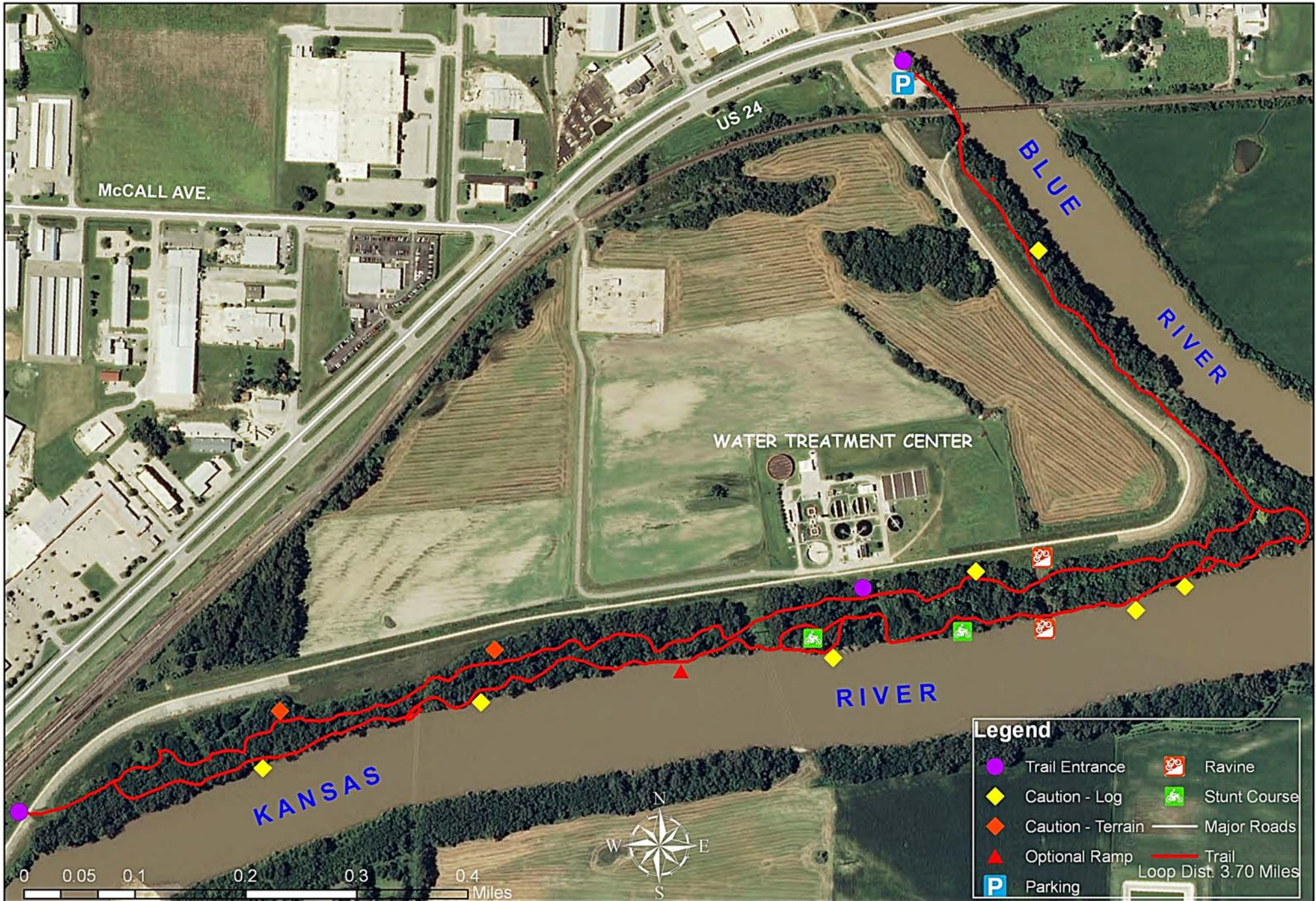
3.7 Miles

All Abilities

Mountain Bike Ride



Manhattan, Kansas, River Trails



Map intended as an aid in navigation. Trail and conditions may change. Not responsible for injury or damage to personal property.